



# FLEX OFFICE **FOR LEASE**

**3455-3465 NORTH SERVICE ROAD** BURLINGTON, ON

Listed by:

**AVISON  
YOUNG**

Developed and Managed by:

**Hopewell**<sup>TM</sup>  
DEVELOPMENT

For more information, please contact:

Jeff Flemington, CCIM, SIOR, LEED AP  
Broker, Principal, Director  
905.283.2336  
[jeff.flemington@avisonyoung.com](mailto:jeff.flemington@avisonyoung.com)

Patrick Campbell  
Broker, Principal  
905.283.2345  
[patrick.campbell@avisonyoung.com](mailto:patrick.campbell@avisonyoung.com)

## PROPERTY DETAILS

**AVAILABLE AREA:**

## 3455 North Service Road (Building A)

43,189 sf - **100% Leased**

## 3465 North Service Road (Building B)

46,314 sf - **12,207 sf Remaining** (divisible to 5,705 sf)

## STARTING NET RENT

\$19.00 psf

## ADDITIONAL RENT

\$7.35 psf (2025 est.)

(Excludes janitorial, utilities & management fee)

## TENANT IMPROVEMENT ALLOWANCE

Negotiable

## PARKING

443 stalls

**4.95 stalls per 1,000 sf leased**

## AVAILABILITY

Immediate

## COMMENTS

- Modern office construction with flexible design
- Approximately 1% common area gross up
- Divisible to accommodate smaller tenancies
- QEW exposure for corporate branding
- Future expansion capabilities

## SITE PLAN



# FLEX OFFICE FOR LEASE

## BUILDING SPECIFICATIONS

### STRUCTURAL DATA

- Single Storey (16' to U/S of steel)
- Efficient R/U ratio (gross up factor) of approximately 1%
- Exterior walls are aluminium and glass curtain walls, pre-finished metal panels and architectural concrete

### PARKING

- Free surface parking, first come, first serve

### BUILDING EXTERIOR FINISHES

- Double-entry glass doors
- Tinted double glazed low "E" coated vision windows

### MECHANICAL SYSTEM

- HVAC systems can be tailored to tenant's specific requirements

### FLOORING

- 4" concrete slab on grade throughout
- Floors to be smooth, level, and ready to receive floor finishes by tenant

### ELECTRICAL

The electrical system shall be supported by incoming service capability sufficient to satisfy the needs of standard office users throughout the space.

From a central electrical room, suitably sized, individual services may be provided to each tenant space, specifically designed to satisfy the requirements of the tenant.

### PLUMBING AND DRAINAGE

Plumbing and drainage system is flexible regarding the specific placement of washrooms, cafeteria, and other facilities within the space that require the provision of potable water and the use of sanitary drainage.

### FIRE PROTECTION

Premises shall be equipped with a complete wet pipe sprinkler system in accordance with N.F.P.A. 13 and the Ontario building code, all designed to satisfy the requirements for the office occupancy (light hazard 0.10 gpm per sf). System shall be specifically designed to allow for custom modification to satisfy tenant requirements.

## TRANSIT & AMENITIES



### AMENITIES WITHIN A 5 KM RADIUS

  
**16**  
HOTELS

  
**22**  
GYMS

  
**37**  
GAS STATIONS

  
**308**  
RESTAURANTS

### BUS ROUTES

- **25** Walkers to Appleby GO
- **81** North Service East & West to Appleby & Burlington GO
- **80** Harvester to Appleby & Burlington GO



# FLEX OFFICE FOR LEASE

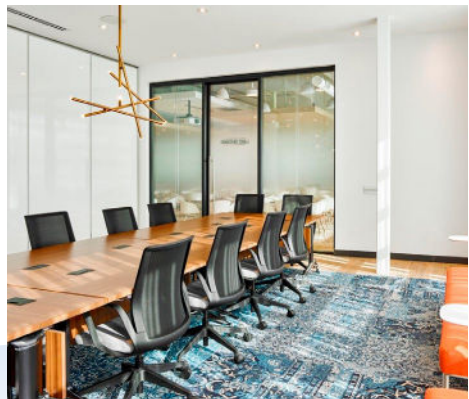
## SITE PLAN





# FLEX OFFICE **FOR LEASE**

## SAMPLE TENANT BUILD OUT





**3455** | **NORTH SERVICE ROAD**  
**3465** | **BURLINGTON, ON**



## FLEX OFFICE **FOR LEASE**

Developed and Managed by:



For more information, please contact:

**Jeff Flemington**, CCIM, SIOR, LEED AP  
Broker, Principal, Director  
905.283.2336  
jeff.flemington@avisonyoung.com

**Patrick Campbell**  
Broker, Principal  
905.283.2345  
patrick.campbell@avisonyoung.com

For almost 30 years, Hopewell Development has been recognized, and trusted, as one of the Canada's premier commercial real estate developers. Focused on the industrial, office and retail asset classes, Hopewell Development operates a fully-integrated platform that encompasses all disciplines relevant to commercial real estate development, from site selection, planning and design, construction, leasing, financing, and property management.

Our team of experienced associates deliver highly personalized and customized solutions that meet the needs and demands of tenants and owners through every phase of the development process.

### **HOPEWELL DEVELOPMENT**

710, 130 King Street West, PO Box 341, Toronto, ON M5X 1E1  
T 416.620.0011 F 416.620.0017 W [www.hopewelldevelopment.com](http://www.hopewelldevelopment.com)

**AVISON  
YOUNG**

[avisonyoung.com](http://avisonyoung.com)

Avison Young  
Commercial Real Estate Services, LP, Brokerage  
77 City Centre Drive, Suite 301 Mississauga, Ontario, Canada L5B 1M5  
T 905.712.2100 F 905.712.2937



Platinum  
member

© 2025, Avison Young. Information contained herein was obtained from sources deemed reliable and, while thought to be correct, have not been verified. Avison Young does not guarantee the accuracy or completeness of the information presented, nor assumes any responsibility or liability for any errors or omissions therein.