



# WHITEMUD17 BUSINESS PARK

Whitemud17 Business Park is strategically positioned within Edmonton's southeast industrial area along Whitemud Drive and 17th Street. The development offers tenants and owner-user groups a unique opportunity to customize a facility by providing multiple options in land size, building configurations, and yard layout. Whitemud17 Business Park can accommodate a variety of uses ranging from oil and gas service operators, distribution, manufacturing, warehousing, equipment storage and more.

## LEASING INQUIRIES

CONTACT US TODAY  
FOR MORE INFORMATION

**Patricia Cayen**

DIRECTOR, INDUSTRIAL LEASING

403.298.8120

pcayen@hopewell.com

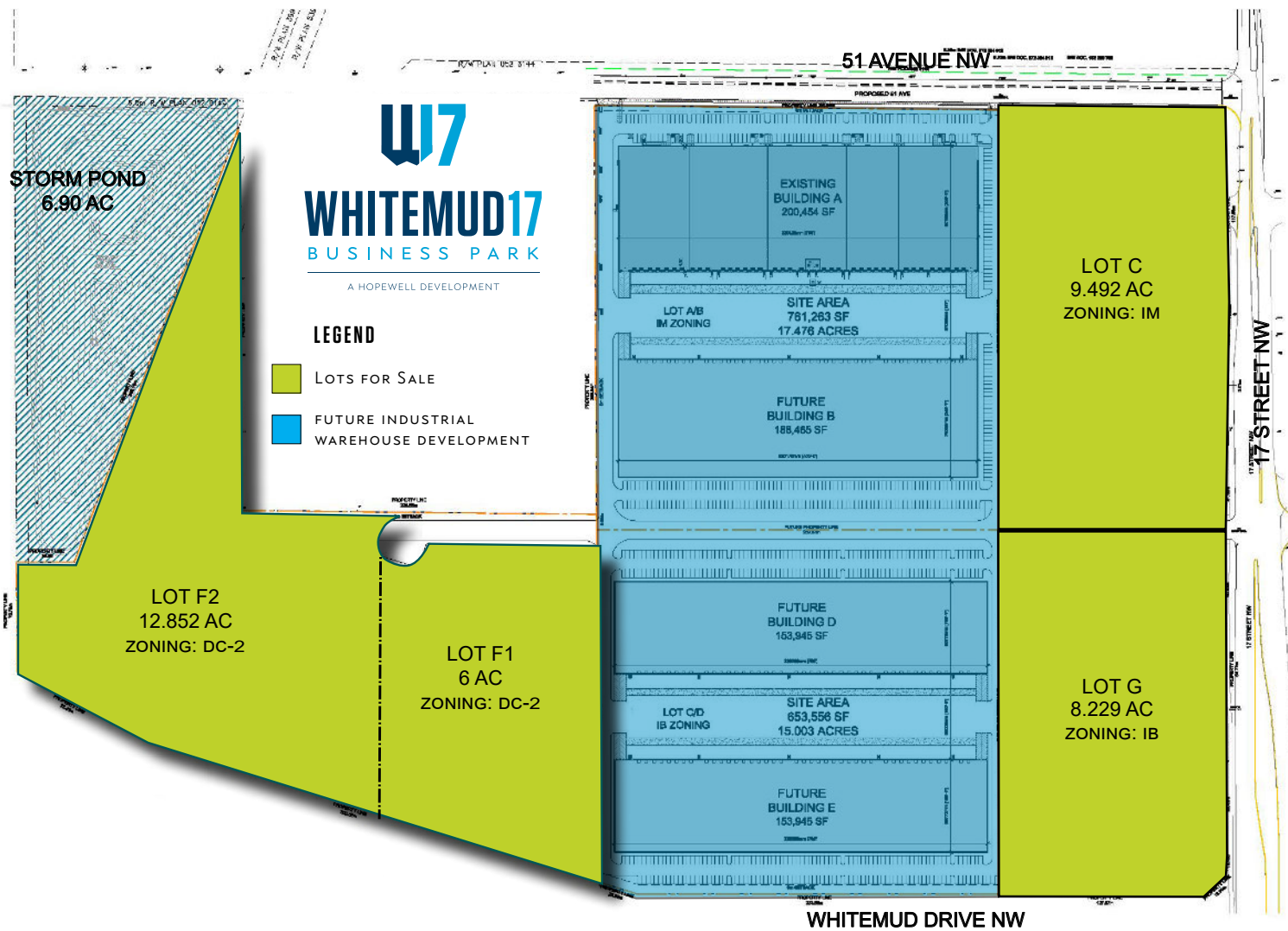
## HIGHLIGHTS

- TOTAL AREA:** Approximately 79 acres
- SITE:** Can be subdivided to provide various sizes & configurations
- SERVICES:** Municipal water, sanitary & storm, power, natural gas, telecommunications
- ZONING:** I-M (medium industrial)  
I-B (industrial business zone)  
DC-2





# LOTS FOR SALE



## CONCEPTUAL PLANS FOR LOT F

