

355 2nd Avenue South

River Centre Promenade

355 2nd Avenue South
Saskatoon, Saskatchewan
www.cbre.com

Up to 5,200 SF in the Heart of Downtown Saskatoon



\$18.00

Asking Lease Rate

\$12.50

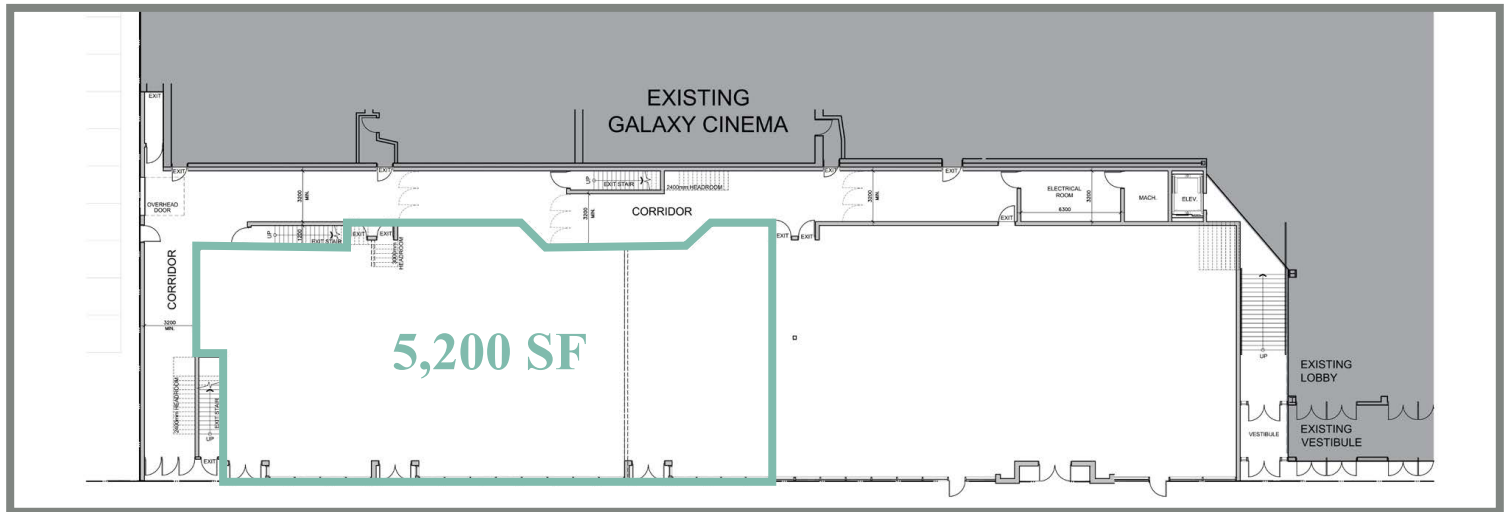
Additional Rent

5,200

Available Square Footage

Lease Opportunity

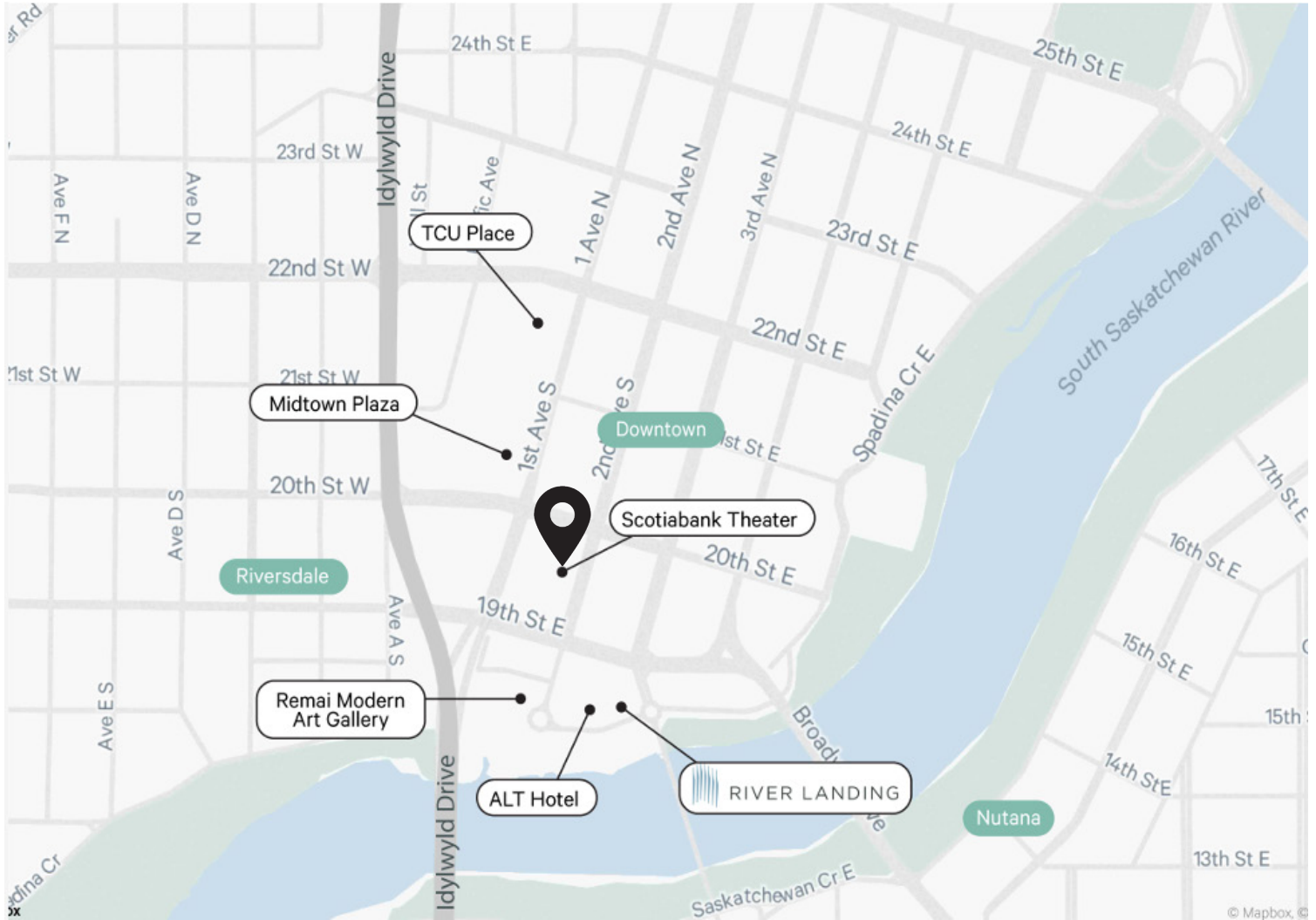
The subject property is available immediately and can be demised to accommodate various sizing requirements. The B6 - Downtown Commercial District zoning allows for a wide range of tenant uses. The River Centre Promenade is located in the bustling Downtown Business and entertainment district of Saskatoon. 2nd Avenue S is a primary street that serves to connect the centre of downtown towards the beautiful Meewasin Trail and South Saskatchewan River. This area is frequented by both locals and tourists, providing a steady stream of vehicle and foot traffic. The space is connected to Scotiabank Cineplex Cinema and is a short walk away from both Midtown Plaza and River Landing.



River Centre Promenade

355 2nd Avenue South | Saskatoon, Saskatchewan

For Lease



Contact Us

Michael Bratvold

Senior Vice President
+1 306 803 5977
michael.bratvold@cbre.com

Ben Kelley

Associate Vice President
+1 306 803 5979
ben.kelley@cbre.com

Dallon Kuprowski

Senior Financial Analyst
+1 306 803 5983
dallon.kuprowski@cbre.com

Shane Endicott

Senior Associate
+1 306 716 7522
shane.endicott@cbre.com

Luke Jansen

Sales Associate
+1 306 803 5981
luke.jansen@cbre.com

© 2023 CBRE, Inc. All rights reserved. This disclaimer shall apply to CBRE Limited, and to all divisions of the Corporation ("CBRE"). The information set out herein (the "Information") has not been verified by CBRE, and CBRE does not represent, warrant or guarantee the accuracy, correctness and completeness of the Information. CBRE does not accept or assume any responsibility or liability, direct or consequential, for the Information or the recipient's reliance upon the Information. The recipient of the Information should take such steps as the recipient may deem necessary to verify the Information prior to placing any reliance upon the Information. The Information may change and any property described in the Information may be withdrawn from the market at any time without notice or obligation to the recipient from CBRE. Canadian Mapping Services canadamapping@cbre.com; DMTI Spatial, Environics Analytics, Microsoft Bing, Google Earth